

# Currency

Designed by Wendy Sheppard

Featuring Mary Koval's *Postage Stamp Collection*

Size: 50" x 70"



**PLEASE NOTE:** QUILT IMAGE SHOWN IS A DIGITAL REPRESENTATION, FABRIC LOOK MAY VARY ON YOUR PROJECT.  
VISIT OUR *FREE PROJECT* SECTION ONLINE FOR ANY PATTERN UPDATES BEFORE STARTING QUILT PROJECT.

**WINDHAM** *W* **FABRICS**



# Currency

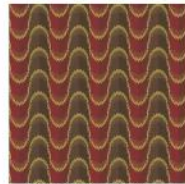
Page 2



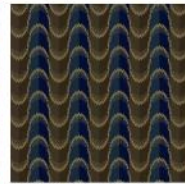
41667-X Multi



41668-1 Red



41669-1 Red



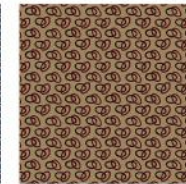
41669-3 Navy



41671-1 Red



41675-3 Navy



41675-5 Brown



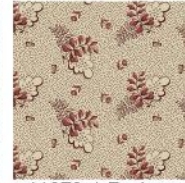
41672-1 Red



41672-2 Blue



41672-5 Brown



41673-1 Red



41673-2 Blue



41673-5 Brown



41671-2 Blue



41677-3 Navy



41677-4 Green



41677-6 Gold



41677-2 Blue



41678-6 Gold

SKU / COLOR	YDS
32035-18 White *	2
41677-3 Navy	1/4y
41672-2 Blue	1/8y
41675-5 Brown	1/3y
41677-4 Green	1/4y
41668-1 Red	1/4y
41671-1 Red	1/4y
41669-1 Red	1/4y
41672-1 Red	1/4y
41669-3 Navy	5/8y

SKU / COLOR	YDS
41672-5 Brown	1/8y
41671-2 Blue	3/8y
41673-1 Red	1/4y
41673-5 Brown	1/8y
41677-2 Blue	1/4y
41677-6 Gold	1/4y
41667-X Multi	5/8y
41673-2 Blue	1/2y
41675-3 Navy	1/8y
41678-6 Gold	1/8y
Backing	4 1/8

\* From Mary's Blenders

51" x 71" piece of Batting

Optional: 1/2y red cluster print (41671-1 Red), cut into 2 1/4" strips.  
Piece strips to make a continuous binding strip.

# Currency

## Page 3

### Cutting Instructions:

1. From navy small print, cut for:

Star blocks -

Widthwise, 3 (1 1/2" x 42"). Subcut 72 (1 1/2" x 1 1/2") squares.

2. From blue print, cut for:

Star block -

Widthwise, 1 (2" x 42"). Subcut 16 (2" x 2") squares.

3. From brown ring print, cut for:

Star blocks -

Widthwise, 1 (2" x 42"). Subcut 14 (2" x 2") squares.

Snowball blocks -

Widthwise, 1 (5 1/2" x 42"). Subcut 4 (5 1/2" x 5 1/2") squares.

4. From green small print, cut for:

Star blocks -

Widthwise, 3 (1 1/2" x 42"). Subcut 72 (1 1/2" x 1 1/2") squares.

Widthwise, 1 (2" x 42"). Subcut 6 (2" x 2") squares.

5. From red wavy floral and red cluster prints, cut from each fabric for:

Snowball blocks -

Widthwise, 1 (5 1/2" x 42"). Subcut 6 (5 1/2" x 5 1/2") squares.

7. From red brown wave print, cut for:

Snowball blocks -

Widthwise, 3 (1 1/2" x 42"). Subcut 81 (1 1/2" x 1 1/2") squares.

6. From red print, cut for:

Star blocks -

Widthwise, 2 (1 1/2" x 42"). Subcut 54 (1 1/2" x 1 1/2") squares.

7. From blue brown wave print, cut for:

Star blocks -

Widthwise, 3 (1 1/2" x 42"). Subcut 72 (1 1/2" x 1 1/2") squares.

Snowball blocks -

Widthwise, 2 (5 1/2" x 42"). Subcut 9 (5 1/2" x 5 1/2") squares.

8. From brown print, cut for:

Star blocks -

Widthwise, 1 (1 1/2" x 42"). Subcut 27 (1 1/2" x 1 1/2") squares.

# Currency

## Page 4

9. From blue cluster print, cut for:

Snowball blocks -

Widthwise, 2 (5 1/2" x 42"). Subcut 8 (5 1/2" x 5 1/2") squares.

10. From white tonal, cut for:

Star blocks -

Widthwise, 6 (2" x 42"). Subcut 118 (2" x 2") squares.

Widthwise, 9 (3 1/2" x 42"). Subcut 236 (1 1/2" x 3 1/2") rectangles.

Snowball blocks -

Widthwise, 12 (2" x 42"). Subcut 232 (2" x 2") squares.

11. From red on white print, cut for:

Star blocks -

Widthwise, 1 (2" x 42"). Subcut 20 (2" x 2") squares.

Snowball blocks -

Widthwise, 1 (5 1/2" x 42"). Subcut 2 (5 1/2" x 5 1/2") squares.

12. From brown on white print, cut for:

Star blocks -

Widthwise, 1 (2" x 42"). Subcut 16 (2" x 2") squares.

13. From blue small print, cut for:

Star blocks -

Widthwise, 4 (1 1/2" x 42"). Subcut 90 (1 1/2" x 1 1/2") squares.

14. From gold small print, cut for:

Star blocks -

Widthwise, 3 (1 1/2" x 42"). Subcut 63 (1 1/2" x 1 1/2") squares.

15. From focal print, cut for:

Snowball blocks -

Widthwise, 2 (5 1/2" x 42"). Subcut 14 (5 1/2" x 5 1/2") squares.

16. From blue on white print, cut for:

Star blocks -

Widthwise, 1 (2" x 42"). Subcut 18 (2" x 2") squares.

Snowball blocks -

Widthwise, 2 (5 1/2" x 42"). Subcut 9 (5 1/2" x 5 1/2") squares.

17. From navy ring print, cut for:

Star blocks -

Widthwise, 1 (2" x 42"). Subcut 12 (2" x 2") squares.



# Currency

## Page 5

18. From gold small floral print, cut for:

Star blocks -

Widthwise, 1 (2" x 42"). Subcut 16 (2" x 2") squares.

### Constructing Star Block (using blue small print block as example)

1. HST units. Draw a diagonal line on the wrong side of 1 (2" x 2") blue print square. Place square, right sides together, on 1 (2" x 2") white square. Sew 1/4" away from, and on right and left sides of drawn line. Cut along drawn line. Open and press to yield 2 HST units. Square up HST units, along 45-degree line on ruler, to measure (1 1/2" x 1 1/2") raw edge to raw edge.



Repeat to make a total of 4 HST units.

2. Block center. Arrange and sew together 2 (1 1/2" x 1 1/2") navy small print squares and 1 HST unit to make a row, as shown. Repeat to make a total of 2 rows.



Sew 2 HST units to the opposite sides of 1 (2 1/2" x 2 1/2") blue cluster square to make a row.



Sew rows together to complete block center.



3. Framing pieces. Sew 2 (1 1/2" x 3 1/2") white rectangles to the opposite sides of block center.



# Currency

Page 6

Sew 2 (1 1/2" x 1 1/2") navy small print squares to the opposite short sides of 1 (2 1/2" x 3 1/2") white rectangle to make a row. Repeat to make 2 rows.



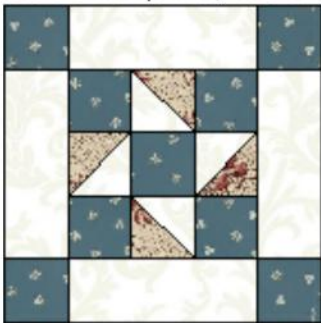
Sew rows to the remaining opposite sides of block center to complete 1 block.



4. Repeat to make a total number of blocks in the following colorways:

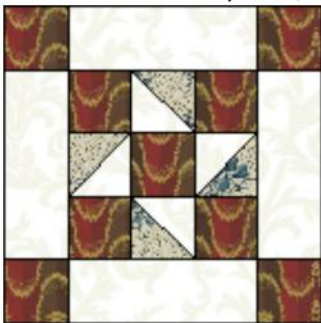
10 blocks:

blue small print / red on white print



9 blocks

red brown wave print / blue on white print



# Currency

Page 7

8 blocks

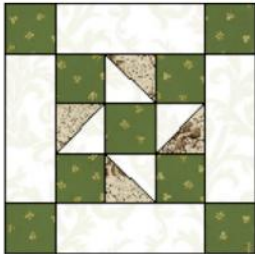
blue brown wave print / gold small floral print



navy small print / blue print

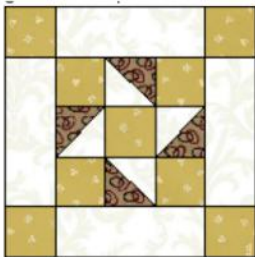


green small print / brown on white print



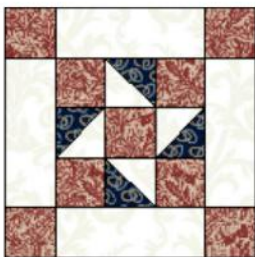
7 blocks

gold small print / brown ring print



6 blocks

red print / navy ring print



# Currency

Page 8

3 blocks

brown print / green small print



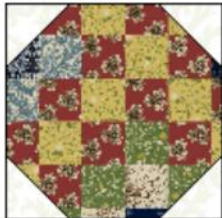
## Constructing Snowball Block

1. Draw a diagonal line on the wrong side of 1 (2" x 2") white square. Place square, right sides together, at a corner of 1 (5 1/2" x 5 1/2") red on white print square. Sew on drawn line. Trim 1/4" away from sewn line. Open and press to reveal white corner triangle. Repeat with three additional (2" x 2") white squares at the remaining corners of the same (5 1/2" x 5 1/2") red on white print square to complete 1 snowball block.

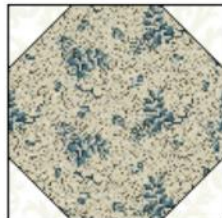
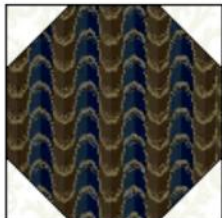


2. Repeat to make a total of blocks in the following colorways:

14 blocks



9 blocks





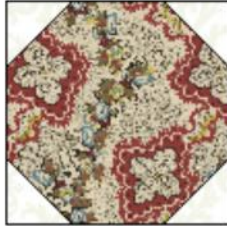
# Currency

Page 9

8 blocks



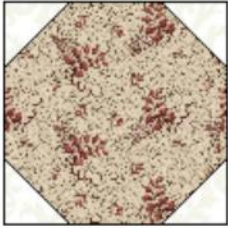
6 blocks



4 blocks



2 blocks



## Quilt Top Assembly

1. Pieced rows. Arrange and sew blocks together into rows, as shown.

Row 1







# Currency

Page 11

Row 10



Row 11



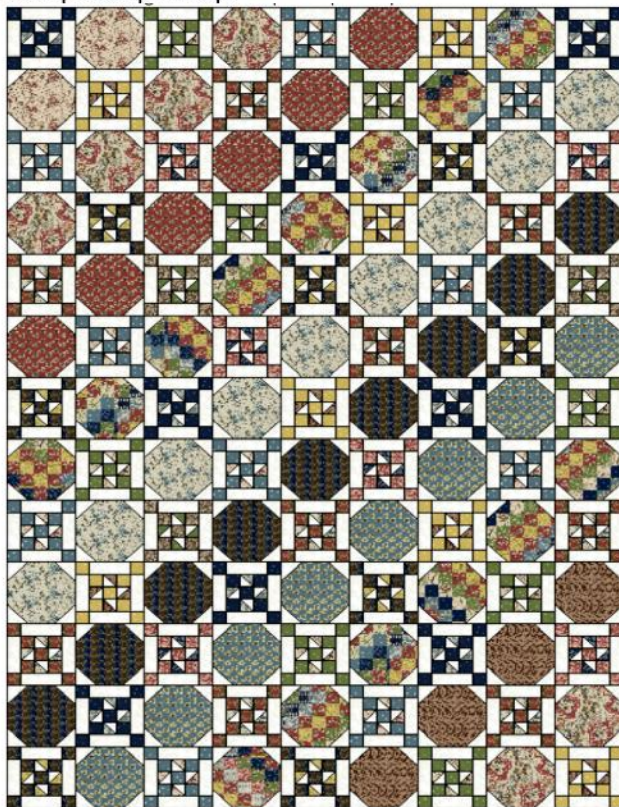
Row 12



Row 13



2. Sew rows together to complete quilt top.



## Quilting Instructions:

With the backing fabric laying taut, place batting and then quilt top to form quilt sandwich. Baste sandwich. Quilt as desired. Bind to finish quilt.